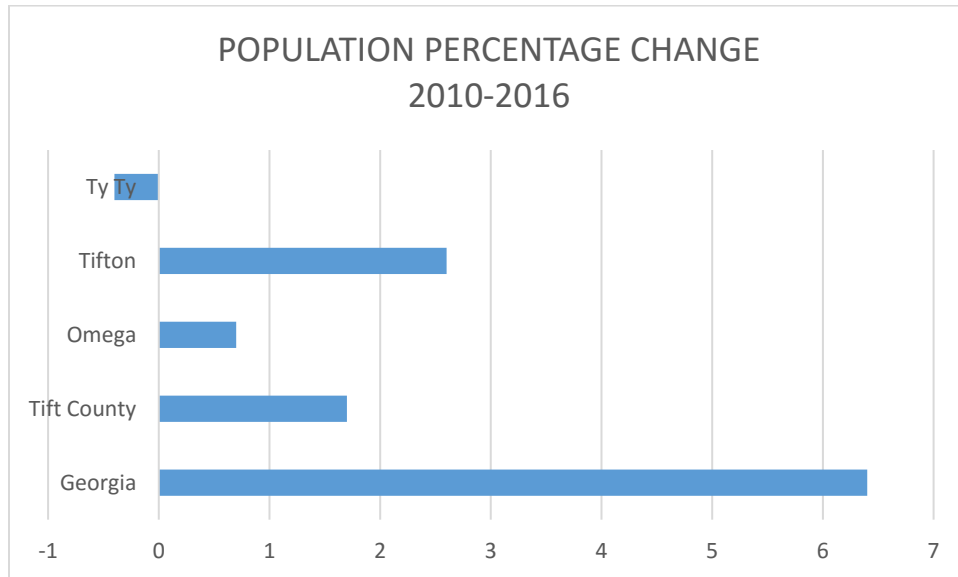
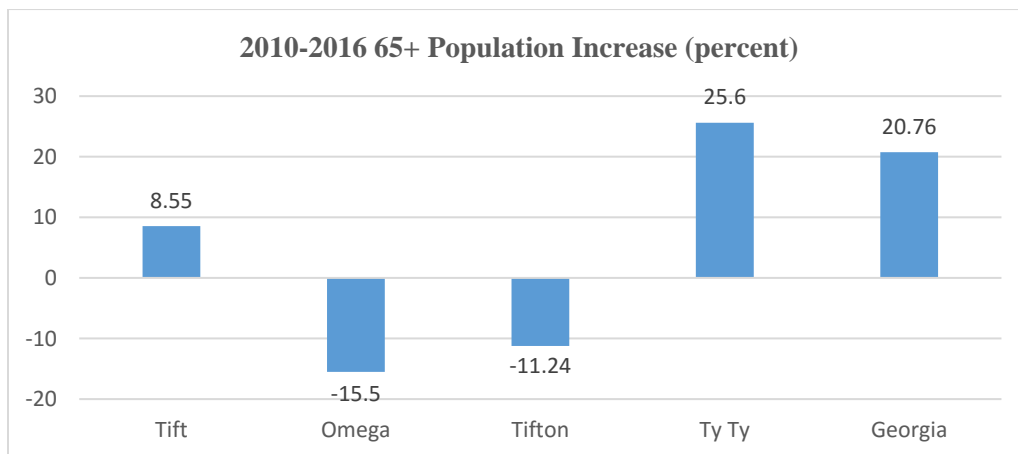


Tift County



The 2016 population of Tift County (the most recent figure currently available) is estimated at 40,828, a 1.7% increase since 2010. The 2016 population of Omega is estimated at 1,227, a 0.7% increase since 2010. The 2016 population of Tifton is estimated at 16,836, a 2.6% increase since 2010. The 2016 population of Ty Ty is 726, a 0.1% decrease since 2010. Georgia’s population for 2016 was estimated at 10,310,371, an increase of 6.4%.

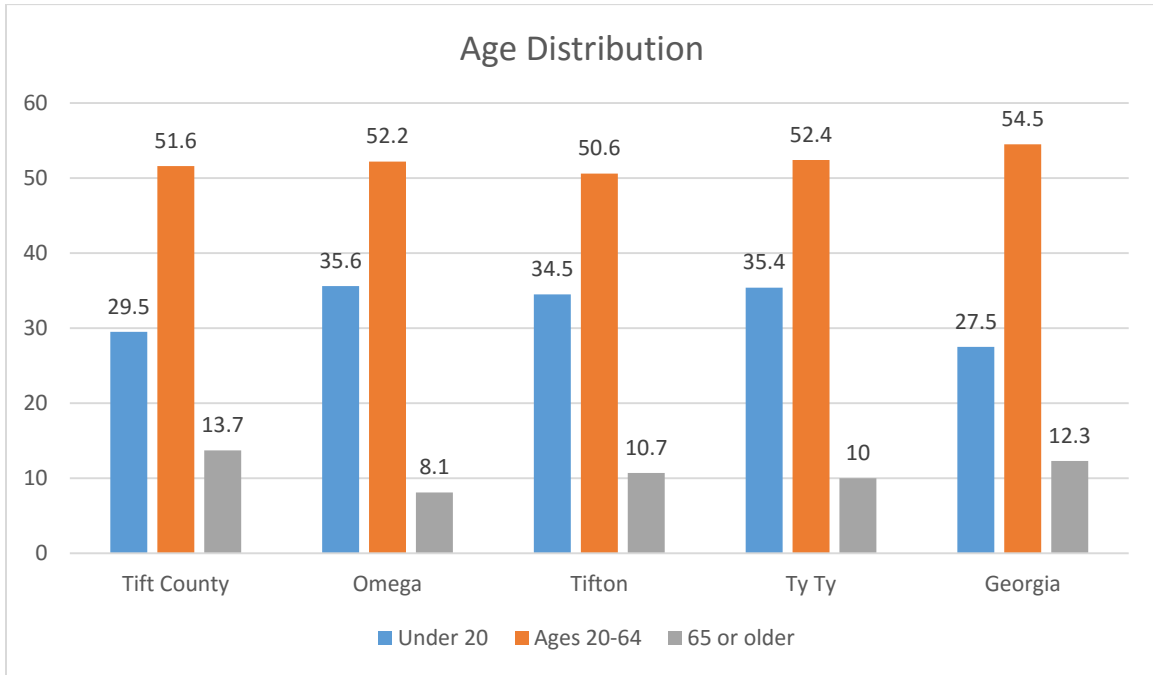
The population increase for the City of Tifton and the County overall may be a result of increased job and housing opportunities due to the growing medical and educational sectors within the County.



(American Fact Finder/Census.Gov)

Since 2010, the percentage of the population aged 65 and older has increased in 2016 for Tift County (2.1%), , the City of Omega has decreased 15.5%, the City of Tifton has decreased 11.24% and the City of Ty Ty 65 and older population has increased 25.60%. Georgia’s 65 and older population increased by 20.76%.

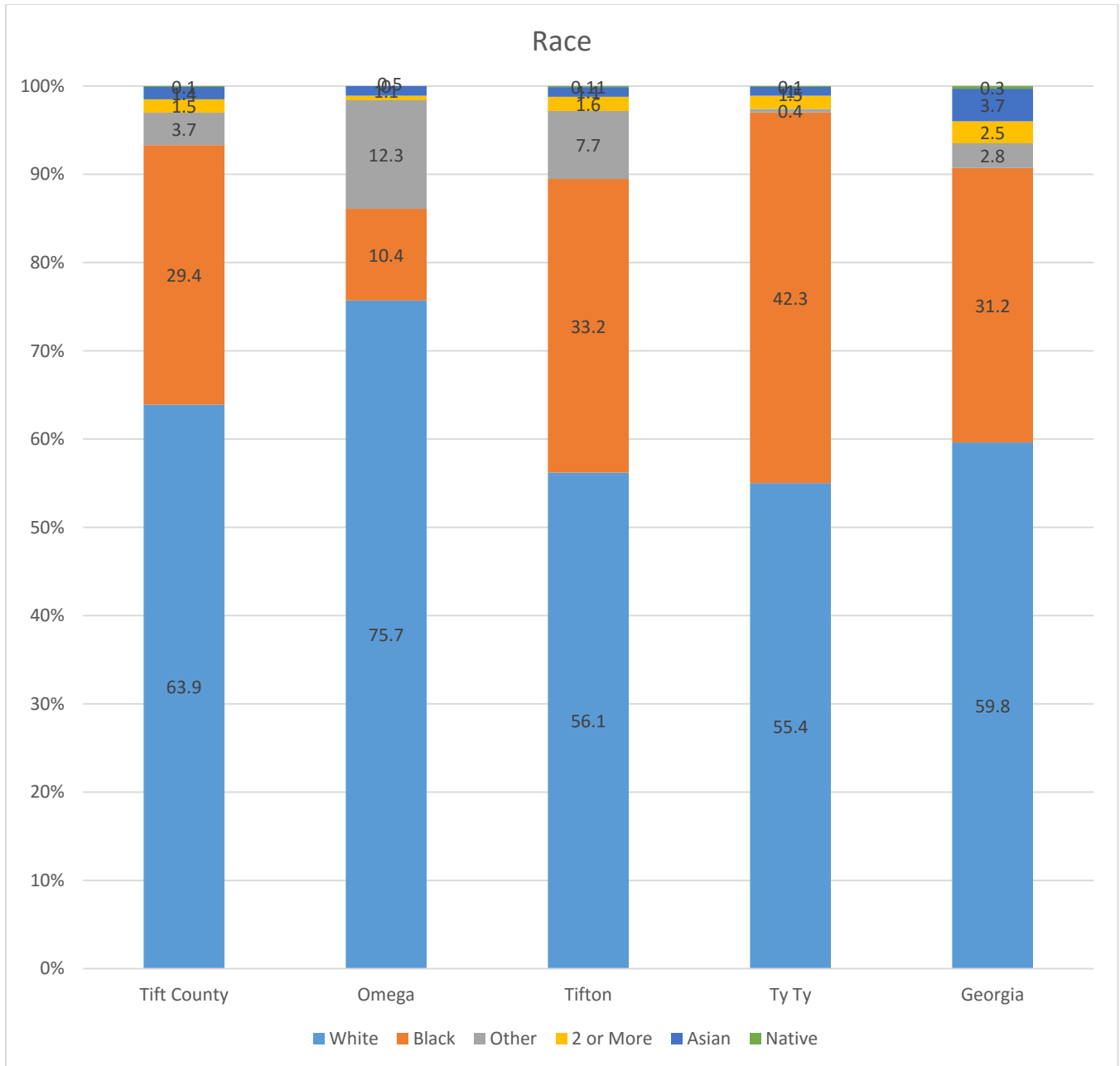
This development might reflect the general tendency in the region for the younger generation to leave the area for higher paying and more plentiful job opportunities and for the retiring generation to return to its roots.



(American Fact Finder/Census.Gov)

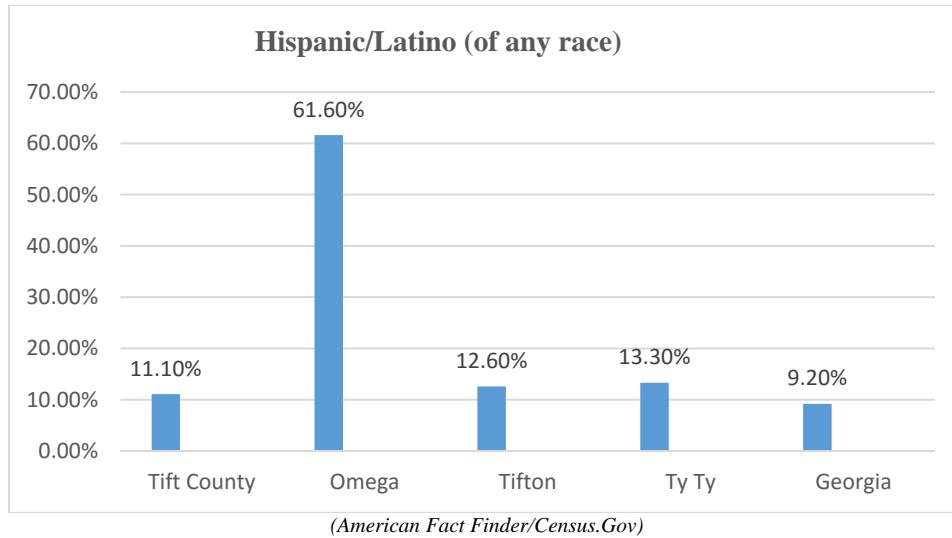
The age distribution in Tift County is 13.7% over 65, 51.60% ages 20-64, and 29.50% under 20. In the City of Omega, the age distribution is 8.1% over 65, 52.2% ages 20-64, and 35.60% under 20. In the City of Tifton, the age distribution is 10.7% over 65, 50.6% ages 20-64, and 34.50% under 20. In the City of Ty Ty, the age distribution is 10.0% over 65, 52.4% ages 20-64, and 35.4% under 20. In Georgia, the age distribution is 12.3% over 65, 54.50% ages 20-64 and 27.50% under 10.

Tift County’s population is 47.2% male and 52.8% female, the City of Omega’s population is 46.2% male and 53.8% female, the City of Tifton’s population is 45.2% male and 54.8% male, and the City of Ty Ty’s population is 46.0% male% and 54.0%% male. Georgia is 47.7% male and 51.3% female.

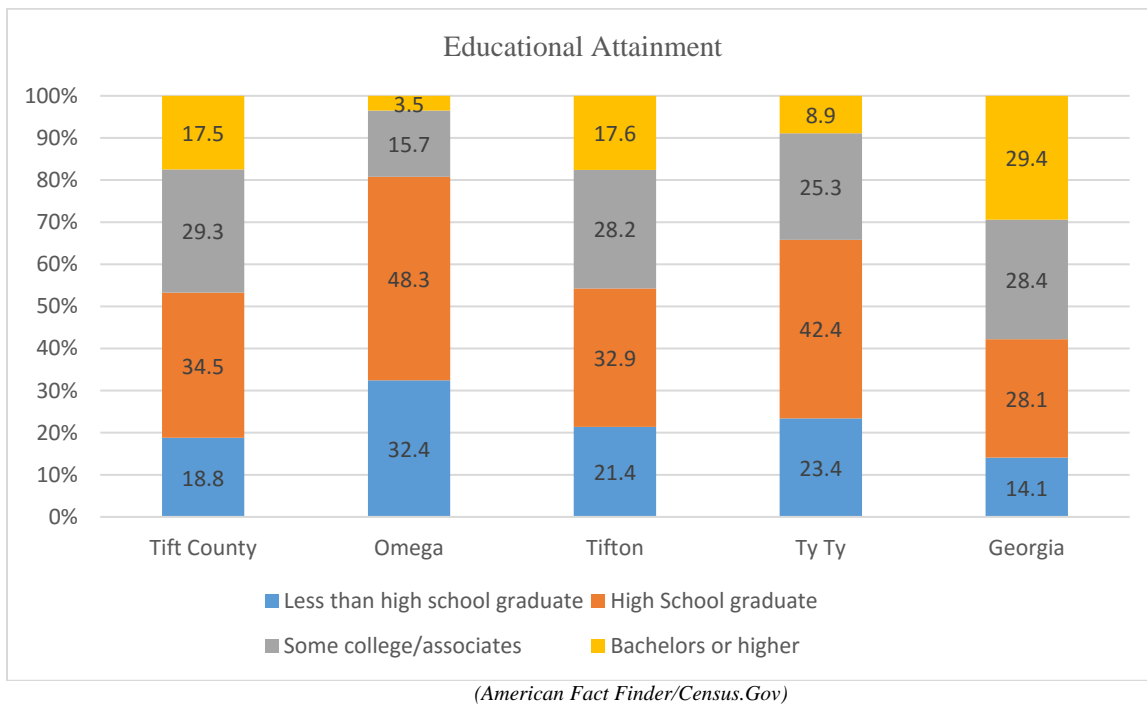


(American Fact Finder/Census.Gov)

The 2016 estimated population of Tift County is 63.9% White/Caucasian, 29.4% Black/African American, 3.7% some other race, 1.5% two or more races, 1.4% Asian and 0.1% Native American. The City of Omega's population is 75.7% White/Caucasian, 10.4% Black/African American, 12.3% some other race, 0.5% two or more races, 1.1% Asian and 0.0% Native American. The City of Tifton's population is 56.1% White/Caucasian, 33.2% Black/African American, 7.7% some other race, 1.6% two or more races, 1.1% Asian and 0.1% Native American. The City of Ty Ty's population is 55.4% White/Caucasian, 42.3% Black/African American, 0.4% some other race, 1.5% two or more races, 1.0% Asian and 0.1% Native American. Georgia's population is 59.8% White/Caucasian, 31.2% Black/African/American, 2.8% some other race, 2.5% two or more races, 3.7 Asian and 0.3 Native American.



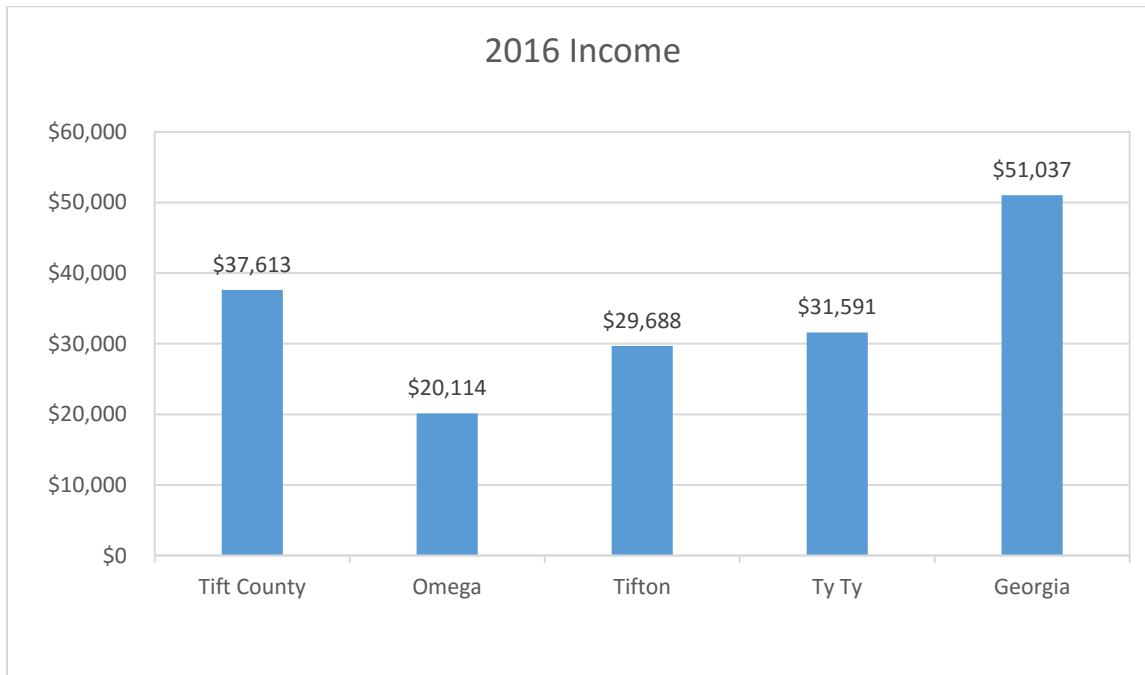
For 2016, Tift County’s population is 11.1% Hispanic/Latino (of any race), the City of Omega’s population is 61.6% Hispanic/Latino, the City of Tifton’s population is 12.6% and the City of Ty Ty’s population is 13.3% Hispanic/Latino. Georgia’s population is 9.2% Hispanic/Latino.



In 2016, among persons aged 25 or older, in Tift County, 18.8% have no high school diploma, 34.5% are high school graduates (includes equivalency) with no further education, 29.3% have an associate’s degree or some college and 17.5% have a bachelor’s or higher degree. Among persons aged 25 or older in the City of Omega, 32.4% have no high school diploma, 48.3% are high school graduates (includes equivalency) with no further education, 15.7% have an associate’s degree or some college and 3.5% have a bachelor’s or higher degree. Among persons aged 25 or older in the City of Tifton, 21.4% have no high school diploma, 32.9% are high school graduates (includes equivalency) with no further education, 28.2% have an associate’s degree or some college and 17.6% have a bachelor’s or higher degree. Among persons aged 25

or older in the City of Ty Ty, 23.4% have no high school diploma, 42.4% are high school graduates (includes equivalency) with no further education, 25.3% have an associate's degree or some college and 8.9% have a bachelor's or higher degree. In Georgia 14.1% have no high school diploma, 28.1% have no high school diploma, 28.4% have an associate's degree or some college and 29.4% have a bachelor's or higher degree.

These numbers highlight the need for continued efforts to increase high school graduation rates and to continue to offer technical education pathways as an alternative to a standard college education.



(American Fact Finder/Census.Gov and Bureau of Labor Statistics)

The median household income in Tift County for 2016 is \$37,613, the median household income in the City of Omega is \$20,114, the median household income in the City of Tifton is \$29,688 and the median household income in the City of Ty Ty is \$31,591. Median household income for Georgia is \$51,037.

An estimated 39.8% of Tift County's population, 66.9% of the City of Omega's population, 39.7% of the City of Tifton's population, and 33.3% of the City of Ty Ty's population live below the federal poverty level. An estimated 17.8% of Georgia's population is living in poverty. In Tift County, 40.0% of persons under age 18 live below the poverty level, in the City of Omega 60.0% of persons under age 18 live below the poverty level, in the City of Tifton 51.7% of persons under age 18 live below the poverty level and in the City of Ty Ty 36.4% of persons under age 18 live below the poverty level. In Georgia, 25.4% of persons under age 18 live below the poverty level.

Tift County's estimated unemployment rate is 5.1%, the City of Omega's unemployment rate is 5.6%, the City of Tifton's unemployment rate is 6.1% and the City of Ty Ty's unemployment rate is 7.7%. Georgia's unemployment rate for 2016 was 8.5%. Among adults aged 16 and older, the rate of labor force participation is 55.4% in Tift County, 35.6% in the City of Omega, 49.2% in the City of Tifton and 51.6% in the City of Ty Ty. Georgia's labor force participation rate for those aged 16 and older is 62.9%.

Lower income level and higher poverty rates are typically associated with higher unemployment rates and lower education attainment, again highlighting the need for improved graduation rates and education and training opportunities.